

Alaska Department of Fish and Game

Habitat Section
Southeast Region



114-34-10200 Tributary 9

ADDITION

Water body name:

Quad: Juneau A-5

Upper Reach Latitude: 58.144066 **Longitude:** -135.618205

Lower Reach Latitude: 58.142692 **Longitude:** -135.618792

Survey date: 9/16/2022

Species & Lifestage:

Survey crew: DK, RR

Findings: We surveyed this uncataloged stream using a backpack electrofisher and GPS and captured juvenile coho salmon. The tributary stream parallels the edge of a muskeg and cuts through the forest to join another uncataloged stream (Table 1; Figures 1–3).

Recommendations: Add this uncataloged stream to the anadromous waters catalog for rearing coho salmon (Figure 4).

Nomination: Pending

Table 1.—114-34-10200 tributary 9 survey data.

Waypoint	Latitude	Longitude	Notes	Stream Width ft	Stream Substrate	Habitat Features	Gradient %	Sample Effort	Sample Results
1858	58.143434	-135.618087	Channel continues just on forest edge.					Not Fished	
1859	58.142963	-135.618729	Stream joins main channel just downstream.					VI	5 CO
1860	58.144070	-135.618225	Stream continues upstream for a while. Second coho escaped during photos.					EF	2 CO

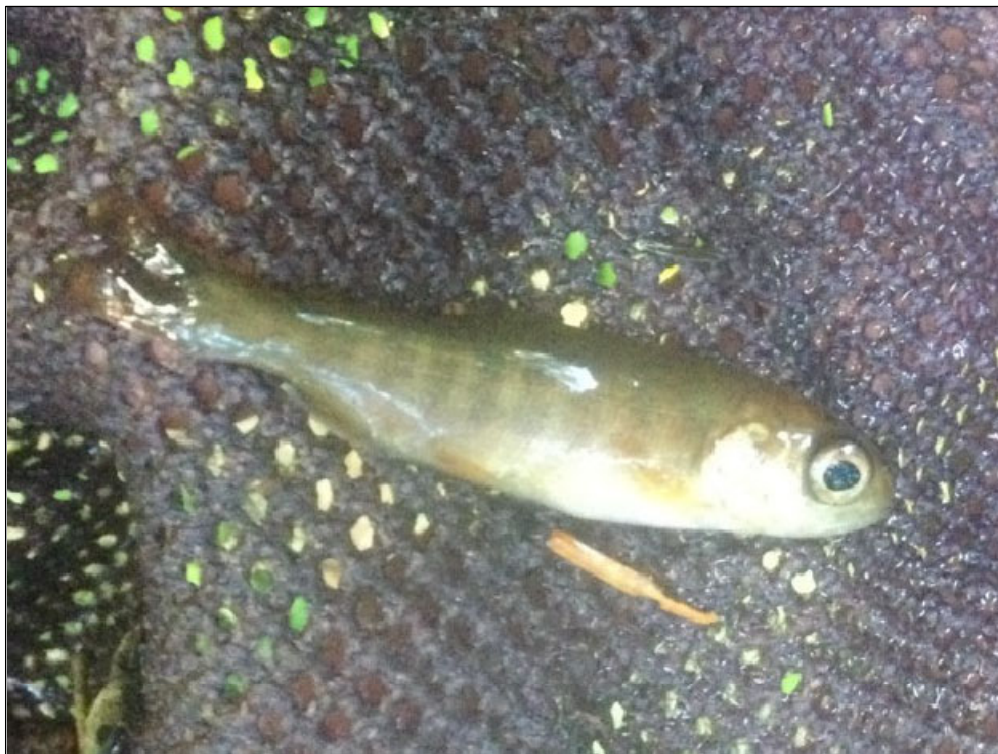


Figure 1.—Juvenile coho salmon captured at waypoint 1860.



Figure 2.—Channel at waypoint 1860.



Figure 3.—Channel at waypoint 1859.

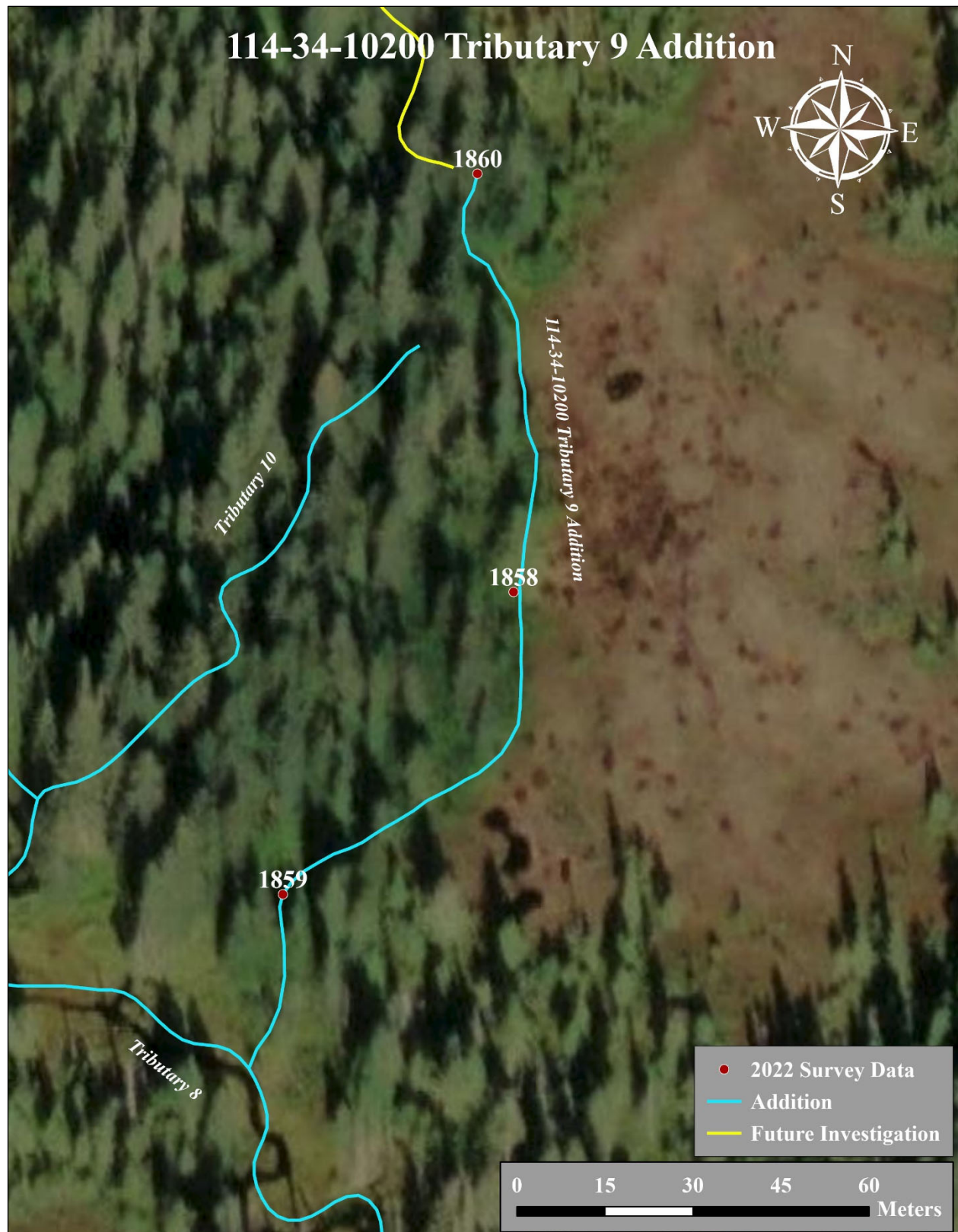


Figure 4.—114-34-10200 tributary 9 addition map.